

Homoeopathic Strategies in Dermatological Disorders

Session 1

MUMBAI

The Academy of Classical Homoeopathy

HOMOEOPATHIC APPROACH IN DERMATOLOGICAL CASES

Acute
exacerbation
of chronic

Old symptoms of
skin can come
back or flare up
of current
symptoms

local
disease

Acute case

Chronic
Cases

The Academy of Classical Homeopathy

Case taking

toality of individual and PQRS symptoms

Complete, exact, in-depth, without over emphasising mind symptoms

Choosing approach

Forming totality

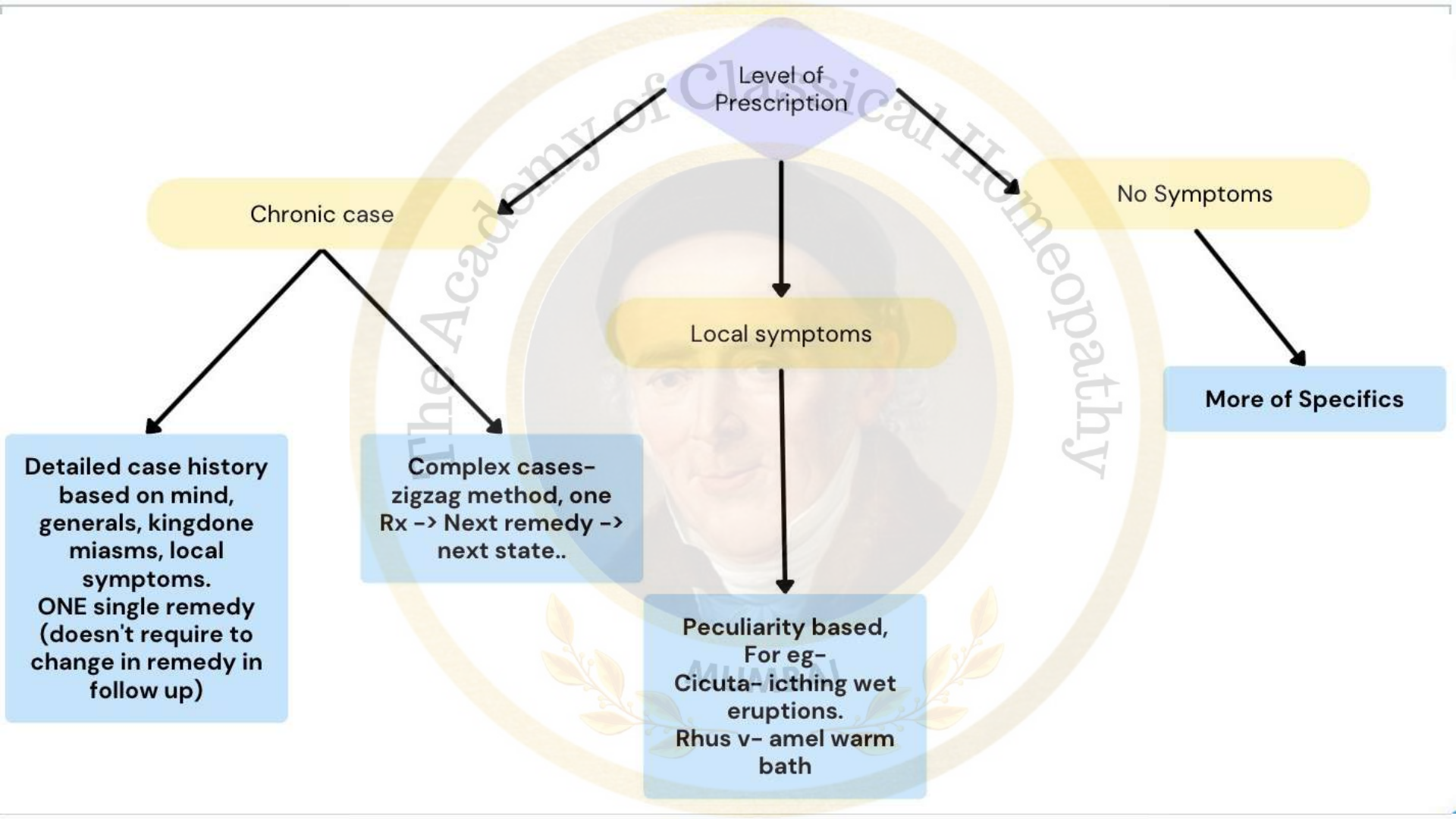
based on types of cases and level of case

Selecting remedy, potency and repetition

Prescription



MUMBAI

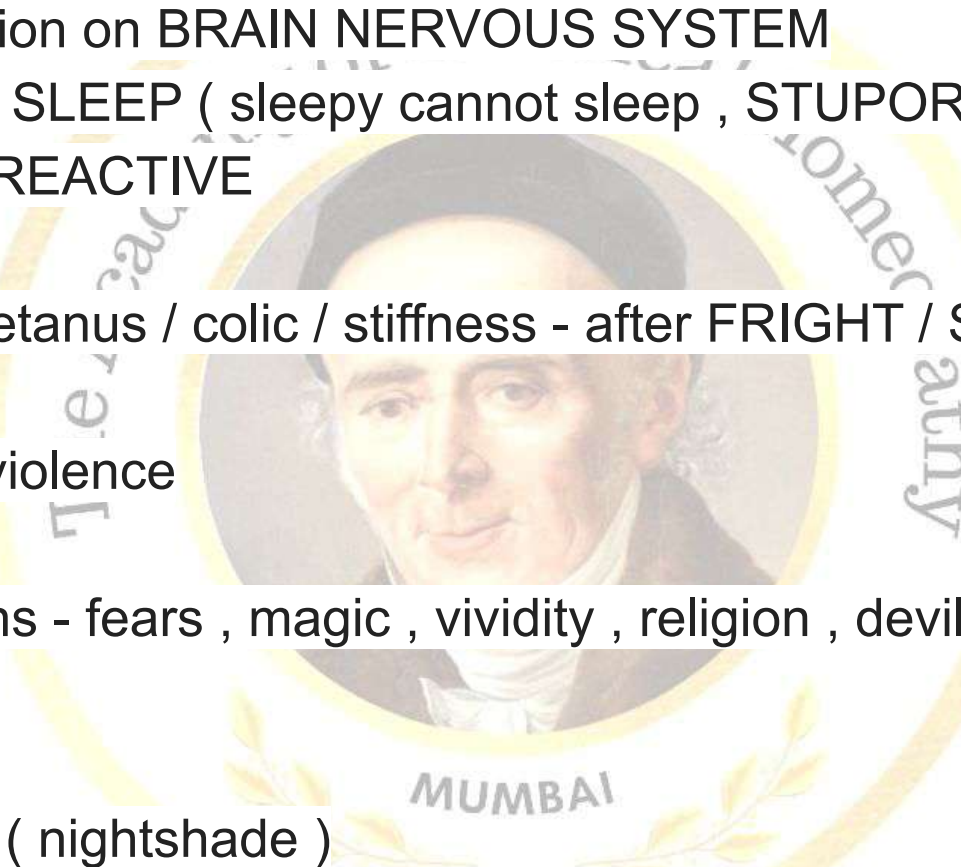


SOLANACEA



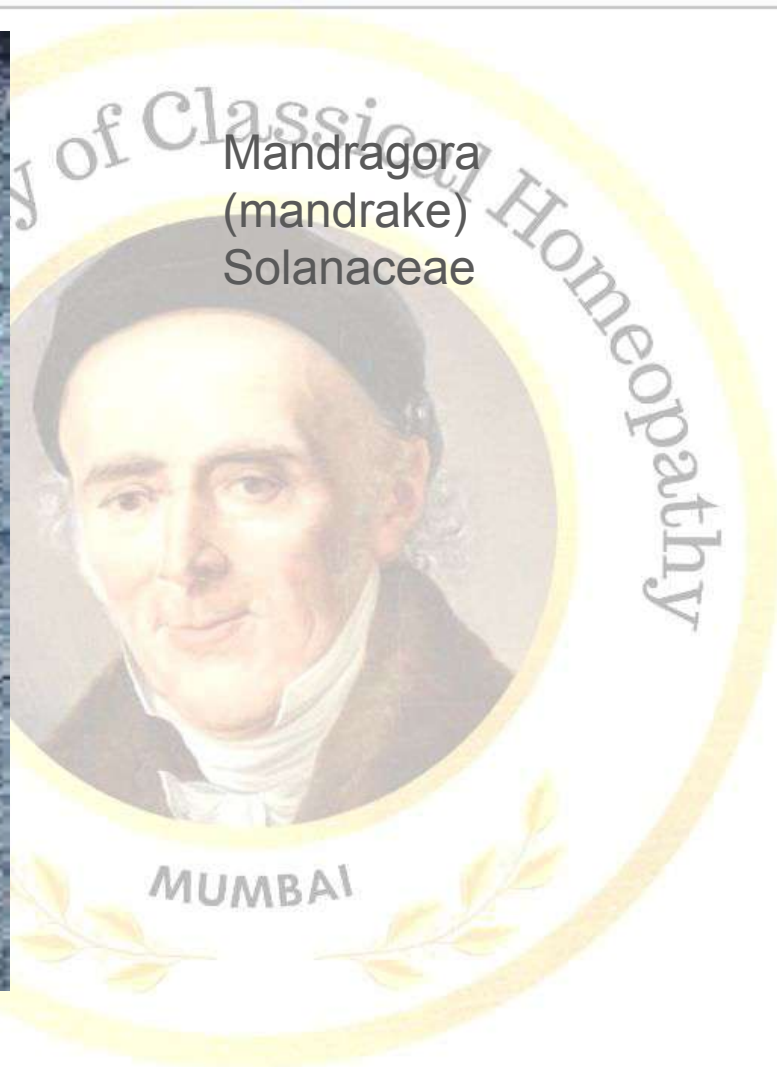
Solanaceae

www.plantscience4u.com

- 
- Special action on BRAIN NERVOUS SYSTEM
 - Disordered SLEEP (sleepy cannot sleep , STUPOR)
 - Extremely REACTIVE
 - DRYNESS
 - Spasms / tetanus / colic / stiffness - after FRIGHT / Sudden EMOTION
 - Victims of violence
 - Loquacity
 - Imaginations - fears , magic , vividity , religion , devils , destruction , animals
 - Instinctive
 - Night AGG (nightshade)



Mandragora
(mandrake)
Solanaceae



Toxic Solanacea

Belladonna

Stramonium

Hyoscyamus



The Academy

Created by

Non-toxic Solanaceae (often food items)

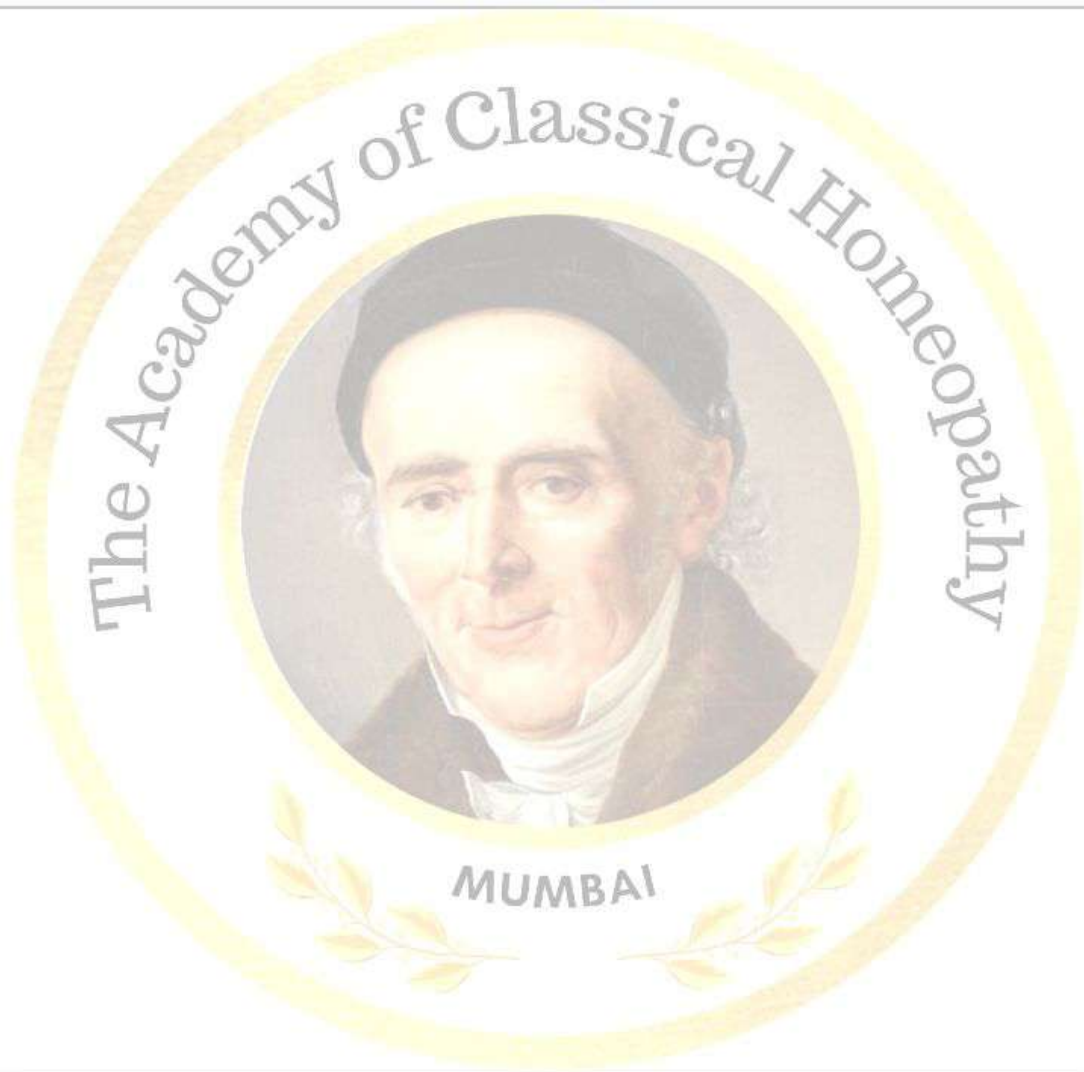
Lycopersicon

Solanum tuberosum

Capsicum



The Academy



The Academy of Classical Homeopathy



MUMBAI

Solanum tuberosum aegrotans

**Diseased potato
Solanaceae**



Solanum tub Aergotans

Is between Toxic and Non Toxic Form of Solanacea
substance is rotten.

There is a specific destructive side in this substance that is not only the solanine,
but also something that is alive and actively destroying the potato.

Solanum tuberosum aegrotans is a plant nosode; it is a disease of the potato



Feeling despised / attacked

These people are very mentally decompensated.

the feeling of being completely unprotected, despised, deprived and attacked by everything around and this is much worse than even Belladonna or Stramonium.

One of the worst feelings of *Solanum tuberosum aegrotans* is not just being attacked, but that the surroundings want to steal the very few little things that I have.



Poor structure- Not well formed

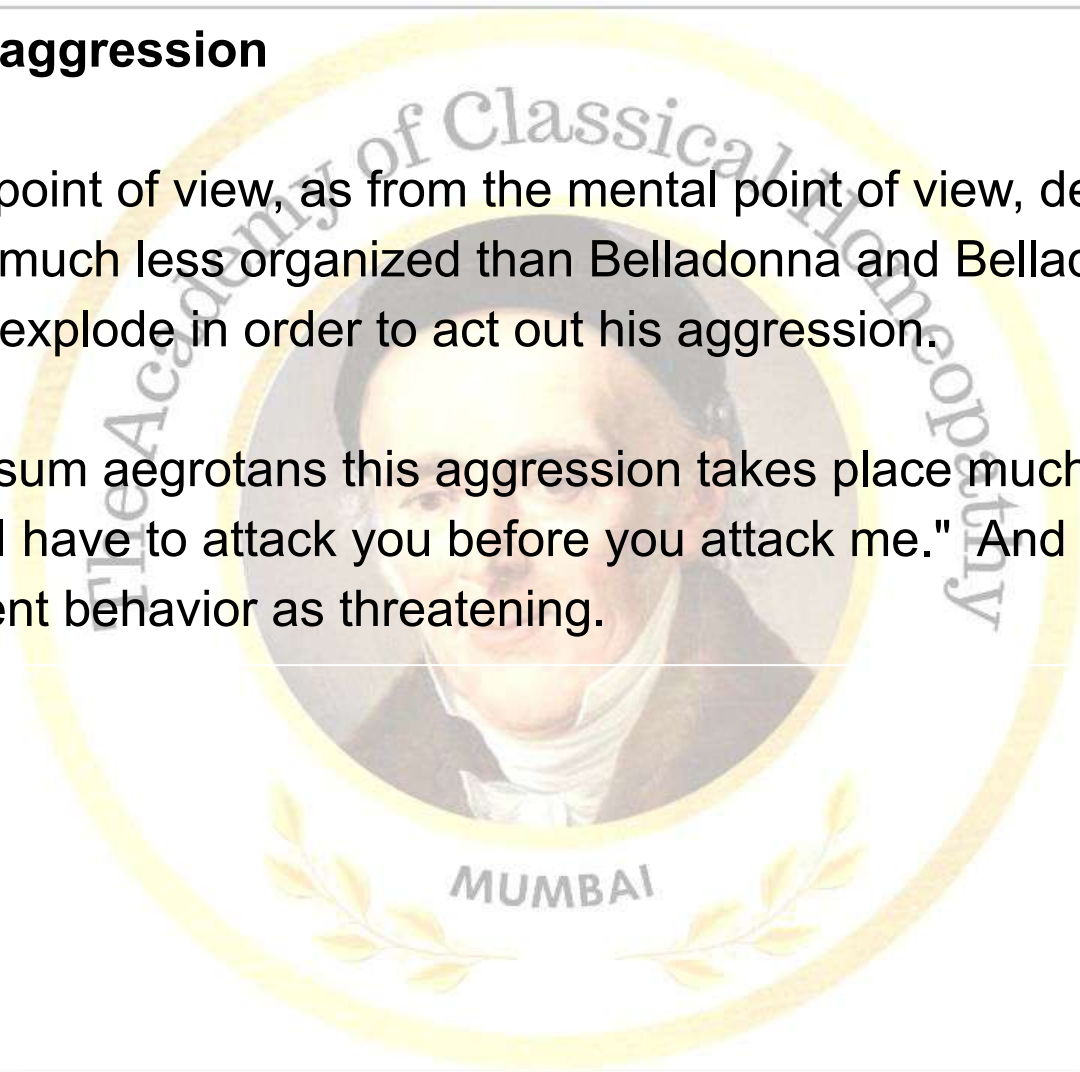
they feel they have very little in their structure and they feel unprotected and deprived. They feel that their family is not giving them the basic things they deserve, and "They even want to steal from me the very few things I have." This can evolve into a possible paranoia, perceiving "enemies that want to take something out of me, not just attacking."



Destructiveness/ aggression

From the physical point of view, as from the mental point of view, destruction is evident. They are much less organized than Belladonna and Belladonna,like. Belladonna has to explode in order to act out his aggression.

In Solanum tuberosum aegrotans this aggression takes place much easier. The main idea is that, "I have to attack you before you attack me." And very often they misinterpret innocent behavior as threatening.



Suspiciousness

Skin symptoms

From the point of view of their behavior, they are usually extremely suspicious.



Destructive diseases

Often they will have severe diseases in childhood: purulent tonsillitis, otitis media with perforation, or pharyngitis with choking. Their diseases are self-destructive and can produce critical and life threatening situations.



Dwelling, brooding

Solanum tuberosum aegrotans is distinguished for their capacity to dwell on their problems.



Past
events

The Academy of Classical Homeopathy

Deprivation Unlucky FEELING

They will say I am an unlucky person; I am a loser by definition. They will talk openly about their bad childhood, their awful parents, that they are unable to forgive. You can see that their vexation is really rooted and the amount of anger and destructiveness that comes out is very strong.



MUMBAI

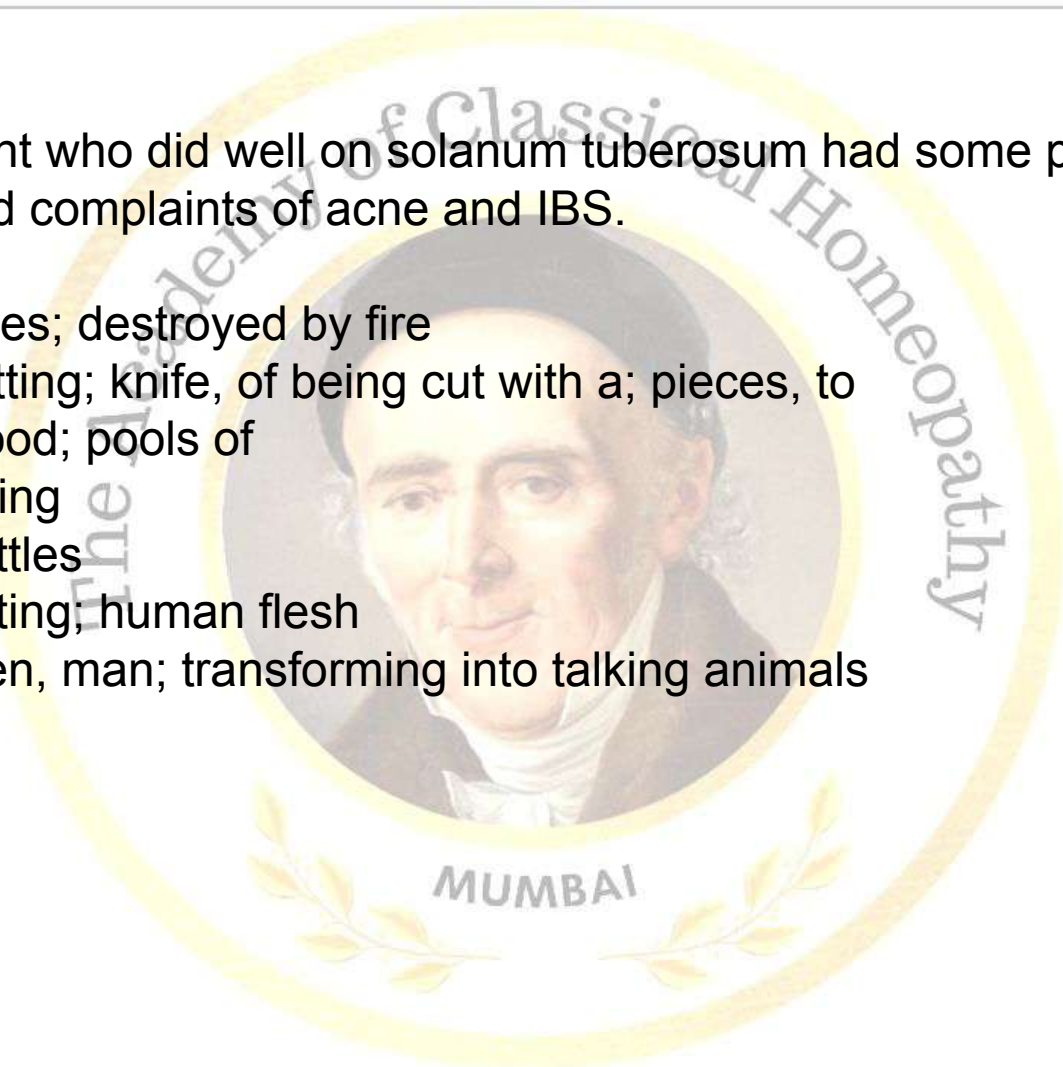
The first time I saw it being used was for a bad case of rectal cancer, with prostate, rectum and lot of bleeding. The main thing about this remedy is the rapid destruction. This remedy belongs to the Solanaceae family and that makes it very interesting because the fear and fright that you see in Solanaceae is also there in this remedy.

They get dreams of dead bodies and the bodies were cut into pieces, cities are on fire and there is a lot of blood, battles, killings, hand is being cut, lot of knives, etc.



One of the patient who did well on solanum tuberosum had some peculiar dreams. She had complaints of acne and IBS.

- Dreams; cities; destroyed by fire
- Dreams; cutting; knife, of being cut with a; pieces, to
- Dreams; blood; pools of
- Dreams; killing
- Dreams; battles
- Dreams; eating; human flesh
- Dreams; men, man; transforming into talking animals

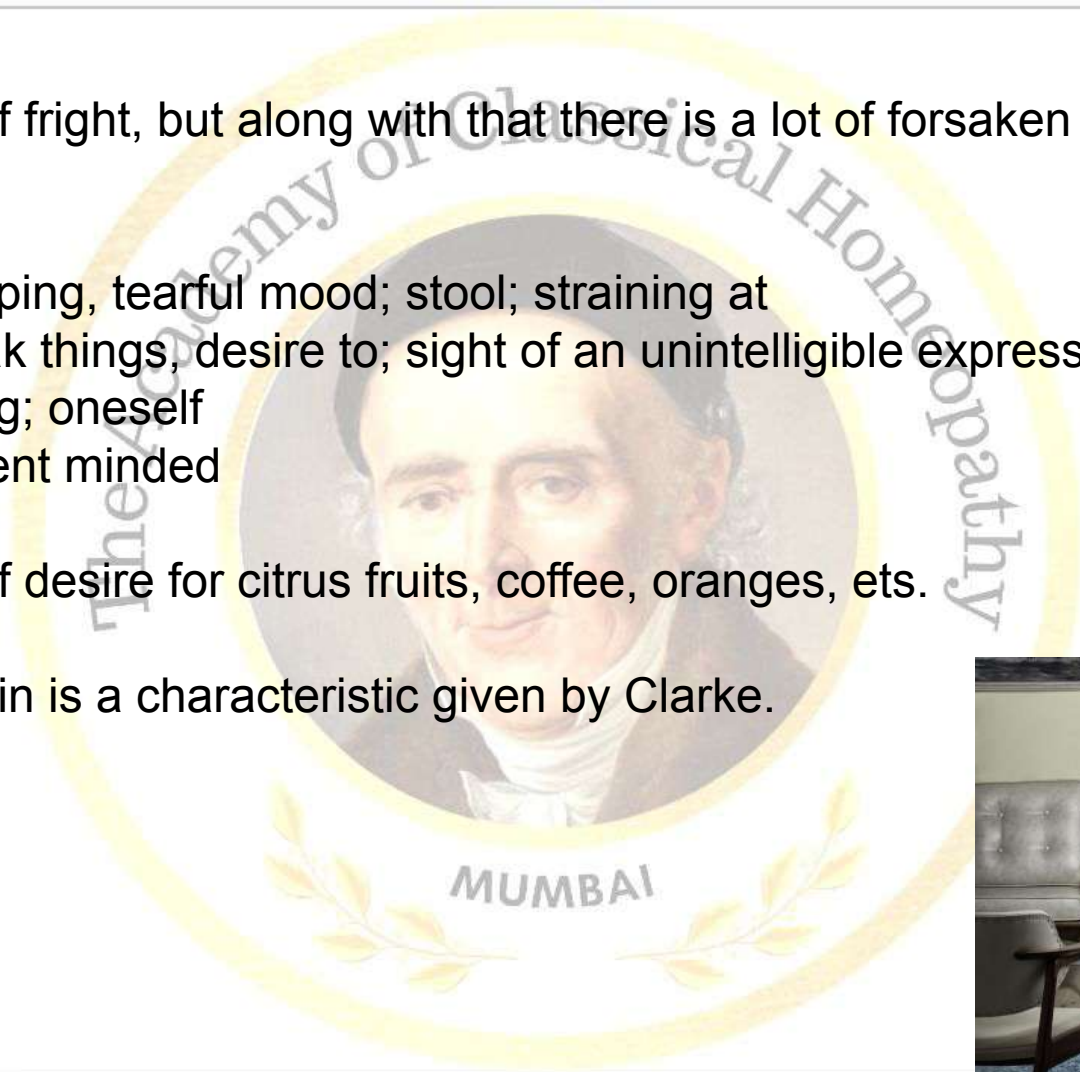


There is a lot of fright, but along with that there is a lot of forsaken feeling, despair.

- Mind; weeping, tearful mood; stool; straining at
- Mind; break things, desire to; sight of an unintelligible expression, at
- Mind; biting; oneself
- Mind: absent minded

There is a lot of desire for citrus fruits, coffee, oranges, etc.

Darkness of skin is a characteristic given by Clarke.



gauranghg@gmail.com



Miasms - Homeopathy - SKIN disorder



Imp lesser known remedies
of SOLANACEA FAMILY



Solanum Nigrum

Black Nightshade



Important for DIABETIC FOOT. - with blackness FOOT
(when Ars, Secale, Lachesis are not indicated)

could be a good remedy for PNEUMONIA and in cases where Lung and Brain is affected
(like HYOS, HELL)

State comes very close to HYOS

SOLANUM NIGRUM [SOL-N.]

NATURAL HISTORY.

Solanum nigrum [Sol-n.]

NATURAL ORDER, Solanaceae.

COMMON NAME, Black Nightshade.

HABITAT, Europe. Preparations. Mother tincture of the whole fresh plant and berries; and dilutions Dosage. Of the tincture, 1 to 5 drops.

GENERAL.

THERAPEUTICS

This remedy has been employed in TETANIC CONVULSIONS with stiffness of the whole body which attends ergotism.

It is useful in MENINGITIS and CEREBRAL IRRITATION during dentition, when there are excruciating pains in the head, and a complete cessation of the mental faculties.

It is also useful in ACUTE CORYZA, when there is a profuse, watery discharge from the right nostril, with alternate heat and chilliness over the body.



A curious feature of the skin effects of the Black nightshade is that they have a tendency to blackness: "The swelling is very painful, it enlarges, becomes shiny, hard, and deep red, and in several places, quite black." "The black hue of the swollen parts grows deeper, the fingers are stiffened," &c. "The tip of the nose, the hands, from the finger-tips to the knuckles, and the toes to the tarsal joints become quite black as if regularly dyed." Corresponding to the black appearance is a bruised feeling all over the body.

The headaches of Sol. n. are described as "frightful." They are splitting, throbbing, bursting, piercing, and are worse by least movement of head, light, noise, stooping, by least movement after sitting, worse in a close room, and rather better in open air.

The day after taking a single dose of \emptyset a patient of Cooper's had this: "Head feels full across forehead, eyes heavy, and forehead burns, could not apply himself to work." The vertigo is worse on moving the head.



The Acacia

Neopathy

Respiratory: Stertor (Op., not in Hell.). Cough from tickling in throat (dryness), < mid-night to morning (with fever). Expectoration: thick, yellow.

Chest: constriction with dyspnea and oppression, > eructations, vomiting, pressure on sternum, cutting in or sore left side to touch.

Heart and circulation: Anxious feeling or pain in precordia, during dyspepsia (Gins.) or fever (Nux-m.), a pseudo-angina pectoris. Throbbing of carotid and temporal arteries. Varicosis.



MUMBAI

pathy

SOLANUM NIGRUM [SOL-N.]

MIND.

Delirium: Frightful: Visions, With. (7) - Mang

Delirium: Recognizes No One: Relatives, His. (7) - Mang

Delirium: Wild. (5) - Mang

Delusions, Imaginations: Poisoned: Has Been, He. (16) - Mang

Delusions, Imaginations: Poisoned: Medicine Is. (9) - Mang

Dreams: animals, of: snakes. (26) - Mang

Dreams: falling: abyss, into. (14) - Mang

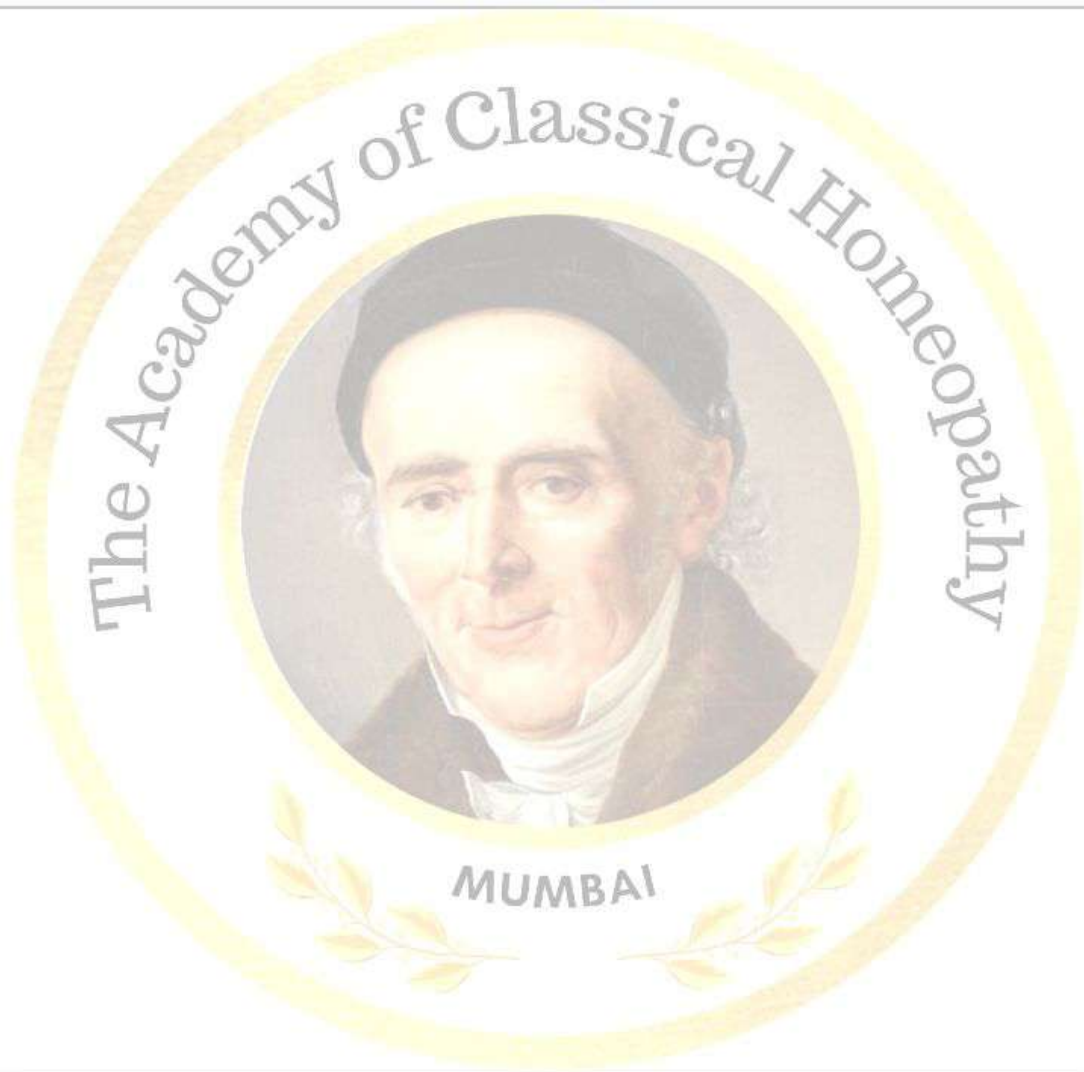
Dreams: Pursued, Of Being. (32) - Mang

Fear: Children, In: Night, Pavor Nocturnus. (11) - Mang

Jealousy. (32) - Mang

JEALOUSY: REVENGE, DESIRES TO TAKE. (6) - Mang

Talk, Talking, Talks: Hasty. (3) - Mang



The Academy of Classical Homeopathy



MUMBAI

SOLANUM OLERACEUM

Juquerioba



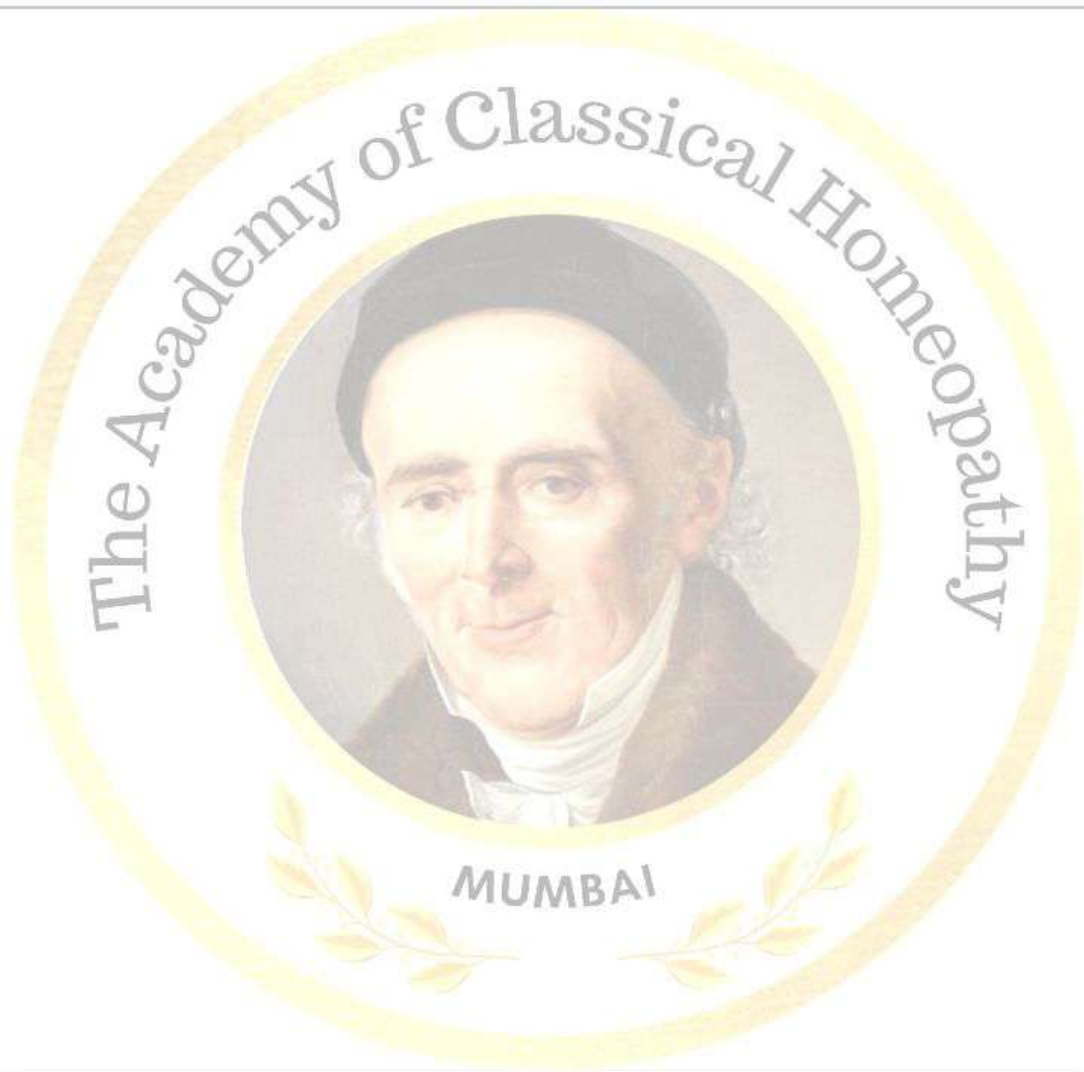
SOLANUM OLERACEUM [SOL-O.]

GENERAL

Solanum oleraceum [Sol-o.]

Solanum oleraceum is prepared from the flowers of Juquerioba, a herbaceous plant growing in the damp marshes of Brazil. It has been found to be highly efficacious in swelling of the mammary glands attended with profuse secretion of milk. We also have long protracted menses and profuse discharge of white mucus from the vagina. This remedy needs further verification.





The Academy of Classical Homeopathy

MUMBAI

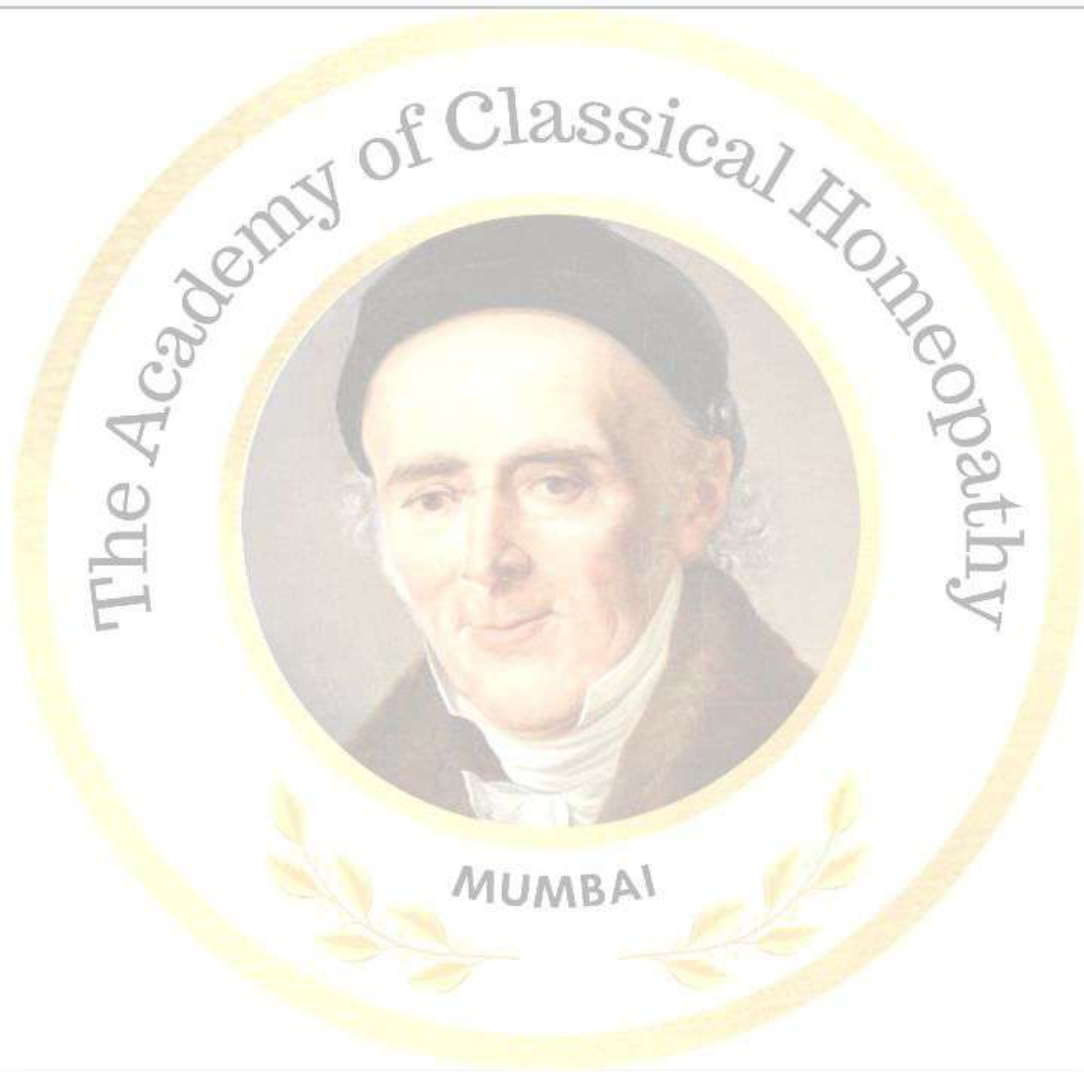
SOLANUM CAROLINENSE

Horsenettle



Sol-c. has convulsions and epilepsy, twenty to forty-drop doses is of great value in grand mal of idiopathic epilepsy, where the disease has begun beyond age of childhood, hystero-epilepsy, also in whooping cough.





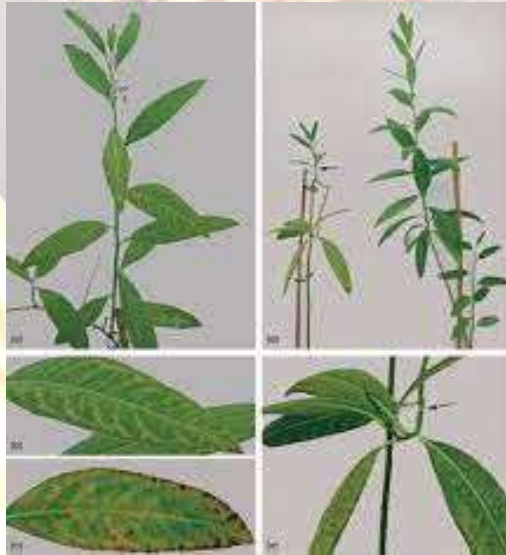
The Academy of Classical Homeopathy

MUMBAI

The Academy of Classical Homeopathy

SOLANUM MALACOXYLON

Waxyleaf nightshade



SOLANUM MALACOXYLON

Category: Plants.

Kind: Shrubby perennial.

Systematics

- Scientific name: *Solanum glaucophyllum* Desf.
- Synonyms: *Solanum malacoxylon* Sendtn. *Solanum pulverulentum* Pers.
- Common names: Waxyleaf nightshade.
- Family: Solanaceae.
- Order: Solanales.



SOLANUM MALACOXYLON[SOL-ML.]

EXTREMITIES

Extremities: **EXOSTOSES:** (15) - Phar

Extremities: **EXOSTOSES:** shoulder: (3) - Phar

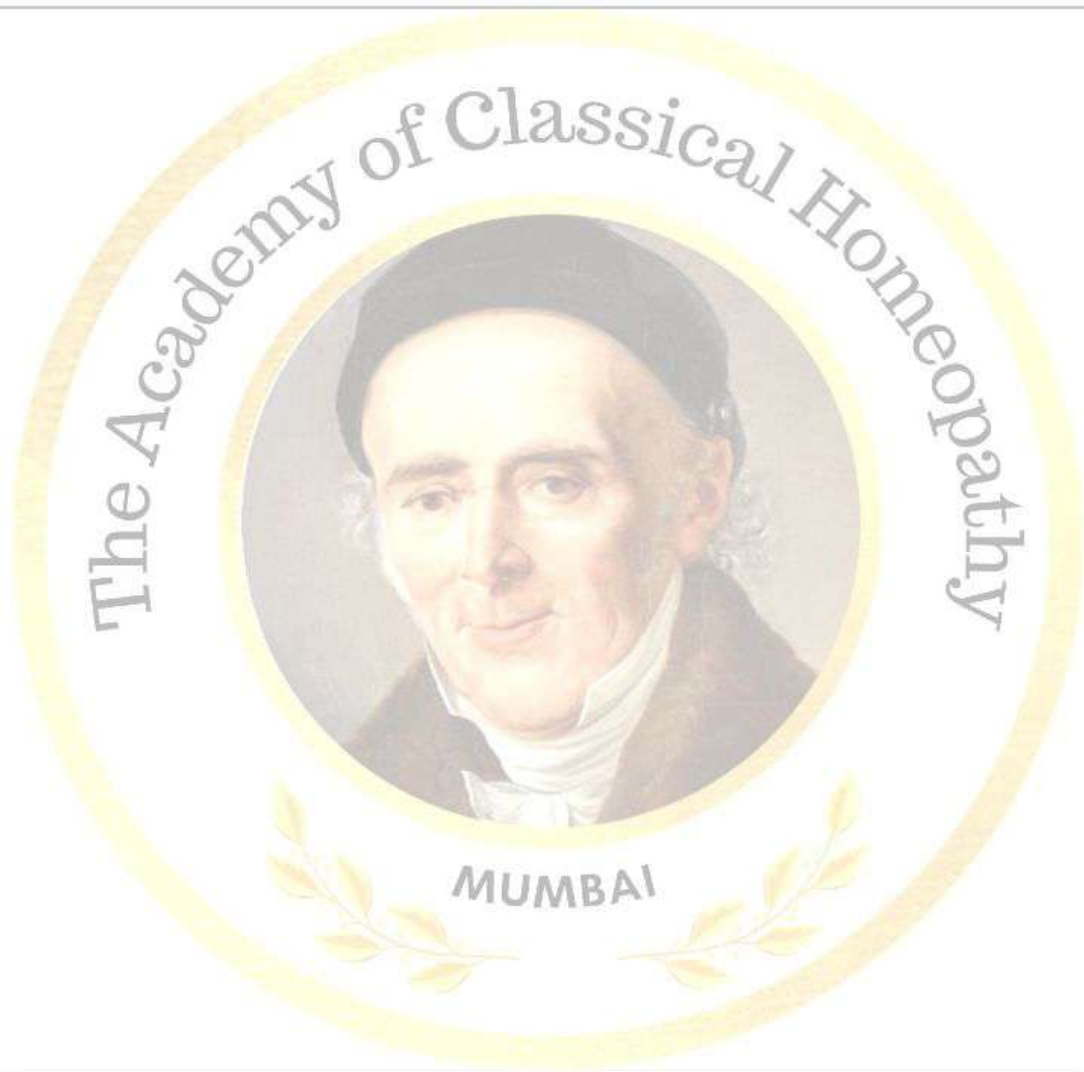


it causes decalcification for patients with calcification in tendons
and osseous calcification

It's a remedy to be thought about - in connection with CALC FLUR



MUMBAI



The Academy of Classical Homeopathy

MUMBAI

Solanum MAMMOSUM



SOLANUM MAMMOSUM [SOL-M.]

NATURAL HISTORY.

Solanum mammosum [Sol-m.]

Apple of Sodom. N.O. Solanaceae. Tincture of fresh ripe fruit.



LEFT SIDED coxalgia

BACK.

Twitching of large muscle below right scapula, as if the flesh were pinched up by the hand and shaken back and forth.

LOWER LIMBS.

Sticking pain in left hip-joint that made him quite lame, frequently during and after walking, disappearing after standing and sitting down.

GENERALITIES.

Uneasiness, inability to keep quiet.

Everything is seen as in a fever with a hard pulse.

Sensitiveness to tobacco.



SLEEP.

Great weariness and desire to sleep without ability to sleep, followed by slumbering without real sleep, and afterwards deep sleep for several hours, from which he awoke and could not collect his senses for a long time, and remained long in an irresolute condition (this condition occurred at time of flood-tide at full moon, with the ebb tide, a general refreshing as after a crisis).

Even after a long sleep during the day he was sleepy in evening, and slept well all night.

Dreams of death with violent weeping.



INABILITY to THINK

CHARACTERISTICS.

Hering is the authority for Sol. mam. The chief symptoms were: Irritability and inability to think, sleepiness, without being able to sleep, a kind a stupor worse at time of flood tide, at the full moon, better with ebb tide, hawking of blood-streaked mucus, sensitiveness to tobacco.

MIND.

Becomes exasperated at what he thinks may happen.

Inability for continuous thought, though with perfect comprehension of his subject, he could, when writing, only express himself in short, broken sentences.

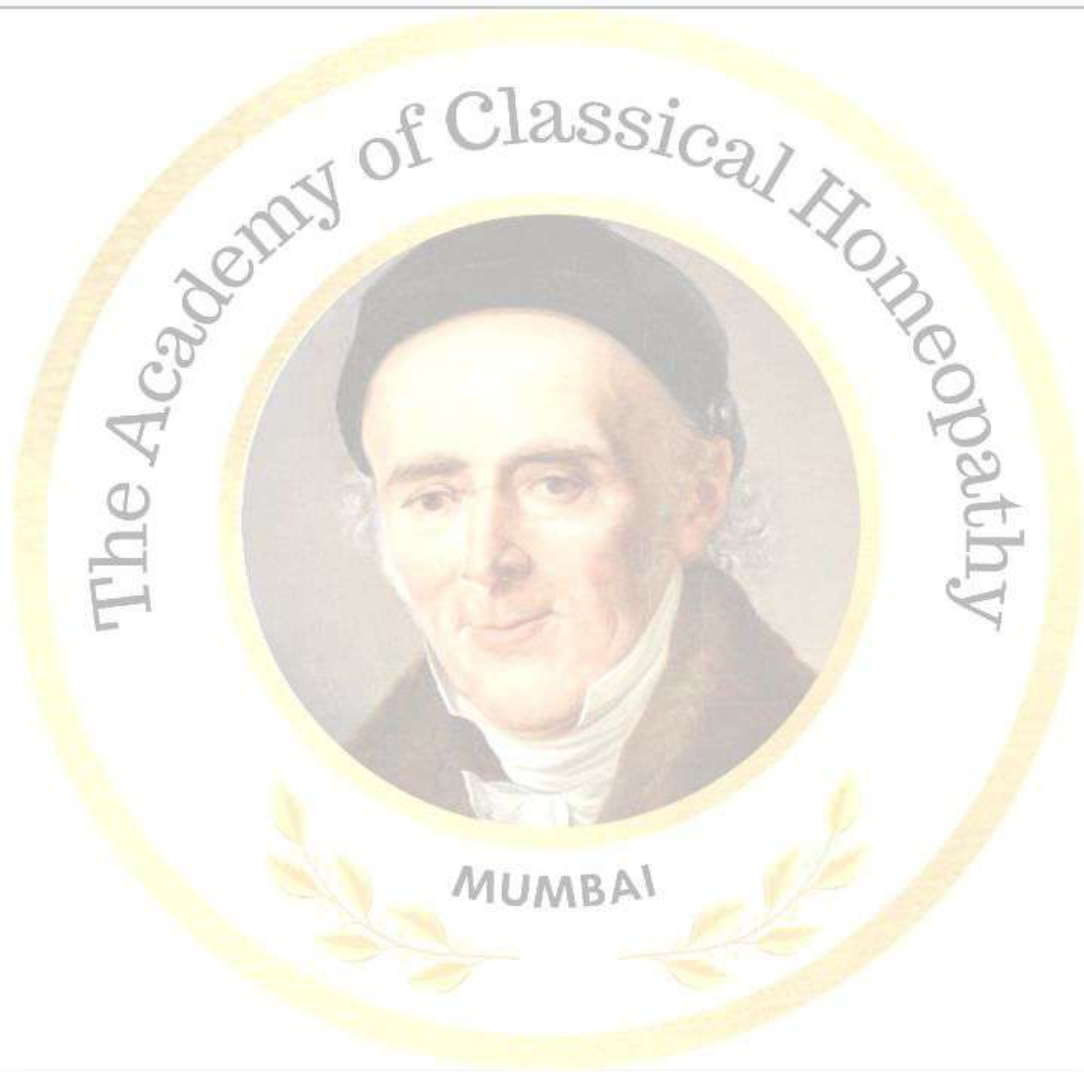


MUMBAI

Like Bell., we have sleepiness without being able to sleep



The Academy of Classical Homeopathy
MUMBAI



The Academy of Classical Homeopathy

MUMBAI

SOLANUM XANTHOCARPUM

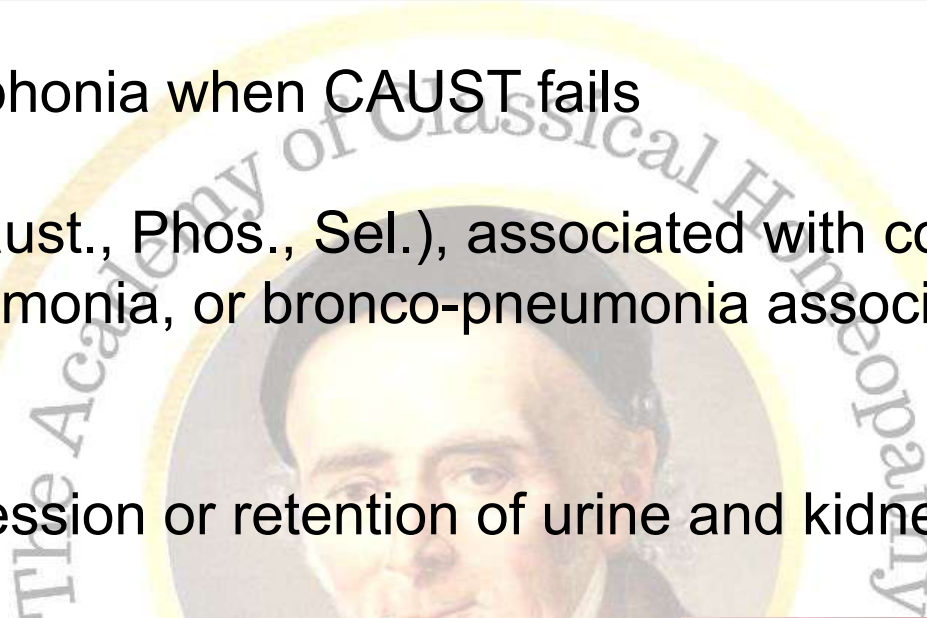
Solanum xanthocarpus. Kantikari. N. O. Solanaceae



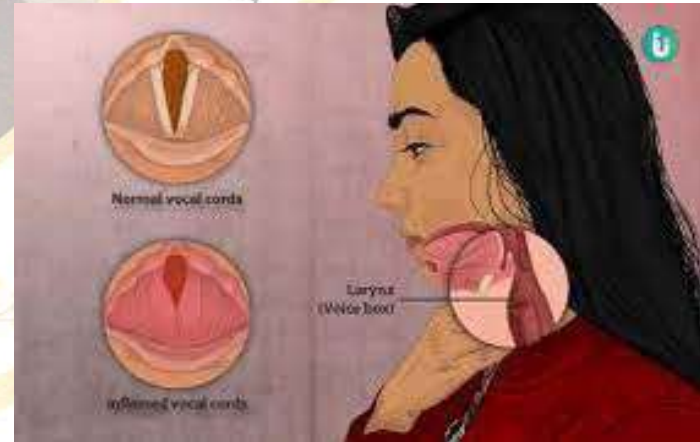
Hoarseness / aphonia when CAUST fails

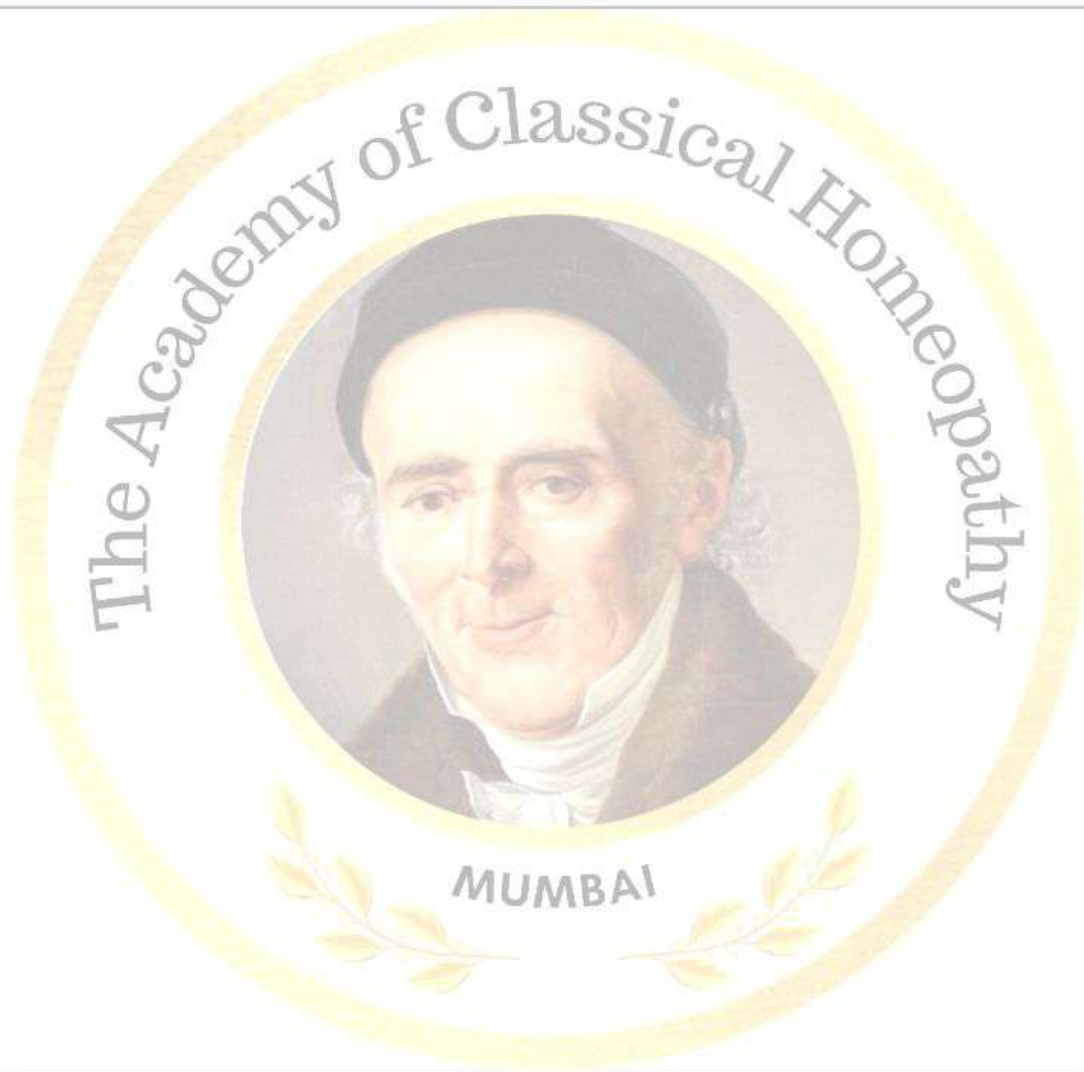
Hoarseness (Caust., Phos., Sel.), associated with cough.
Bronchitis, pneumonia, or bronco-pneumonia associated with
voice loss.

Stricture, suppression or retention of urine and kidney stone.



MUMBAI





The Academy of Classical Homeopathy

MUMBAI

The Academy of Classical Homeopathy

SOLANINUM ACET

Solaninum aceticum. Solanium aceticum aut purum. An alkaloid obtained from various Solanums, especially dulcamara and nigrum, also from the potato plant.



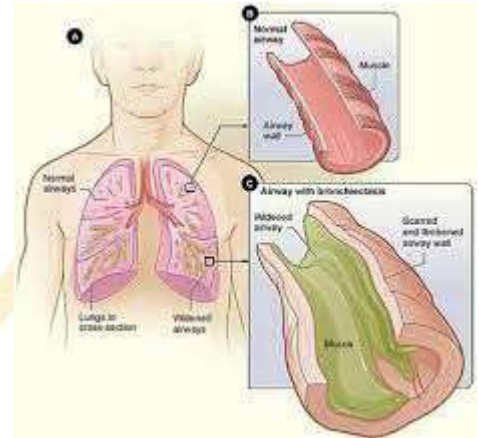
MUMBAI

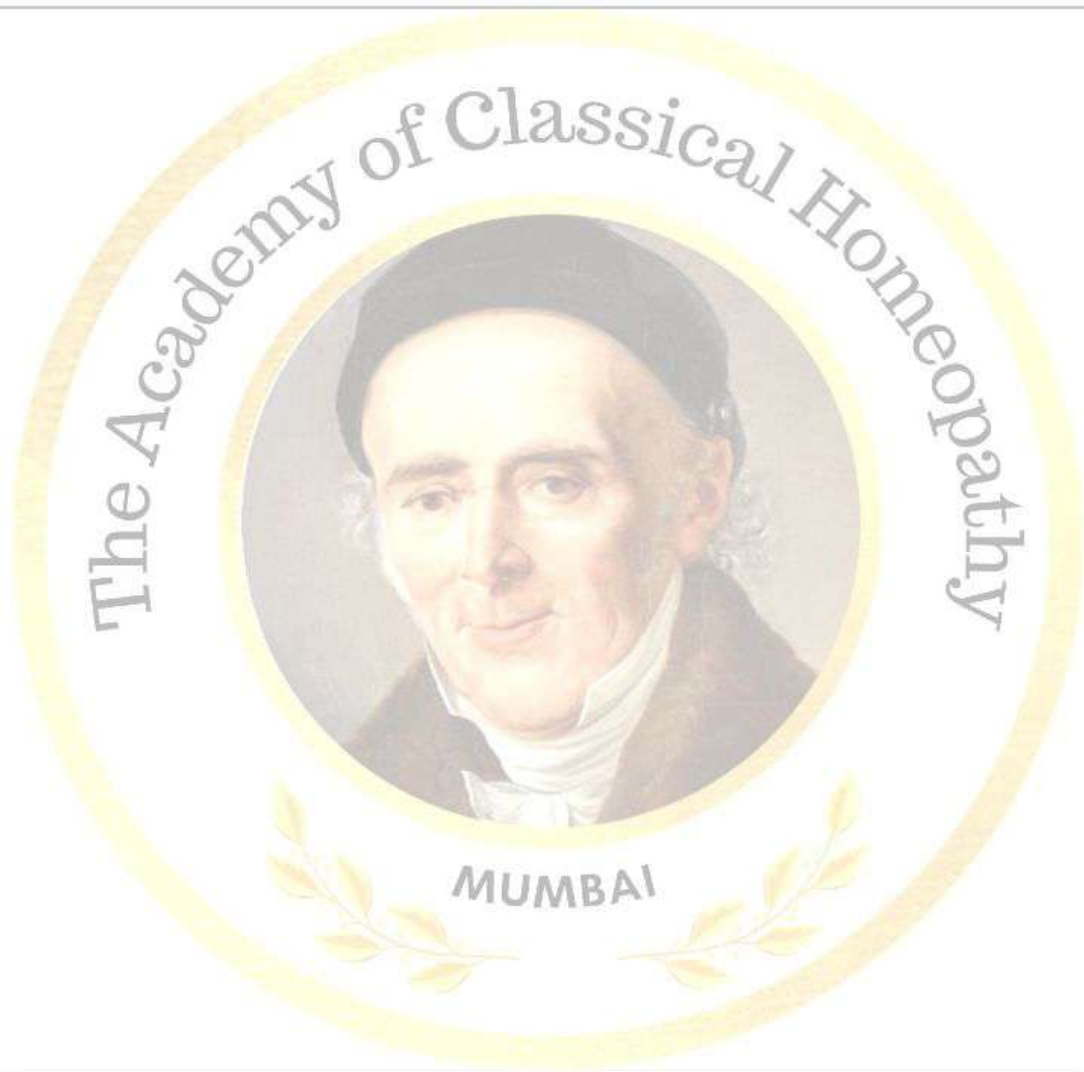
SOLANINUM ACETICUM [SOLIN.]

GENERAL

Solaninum aceticum [Solin.]

This preparation of Solanum vies with Ant. tart. in respiratory paralysis. We have great accumulation of mucus in the larger air passages causing a regular rattling during inspiration. Hence like Ant. tart, it should be particularly thought of in the death rattle of patients, which condition it removes most marvelously by enabling the patient to expel the obstructing phlegm.





The Academy of Classical Homeopathy

MUMBAI

Lycopersicum esculentum. Tomato. Solanum lycopersicum.
Love apple. N. O. Solanaceae.

Clarke knew of one instance in which the slightest indulgence in tomatoes brings on an attack of gout. Cooper commended the use of tomatoes in cases of obesity. Cooper gave Lycpr. in a case of rodent ulcer and caused sharp pain and temporary spread of the disease.



SOLANUM LYCOPERSICUM [LYCPR.]

NATURAL HISTORY.

Solanum lycopersicum [Lycpr.]

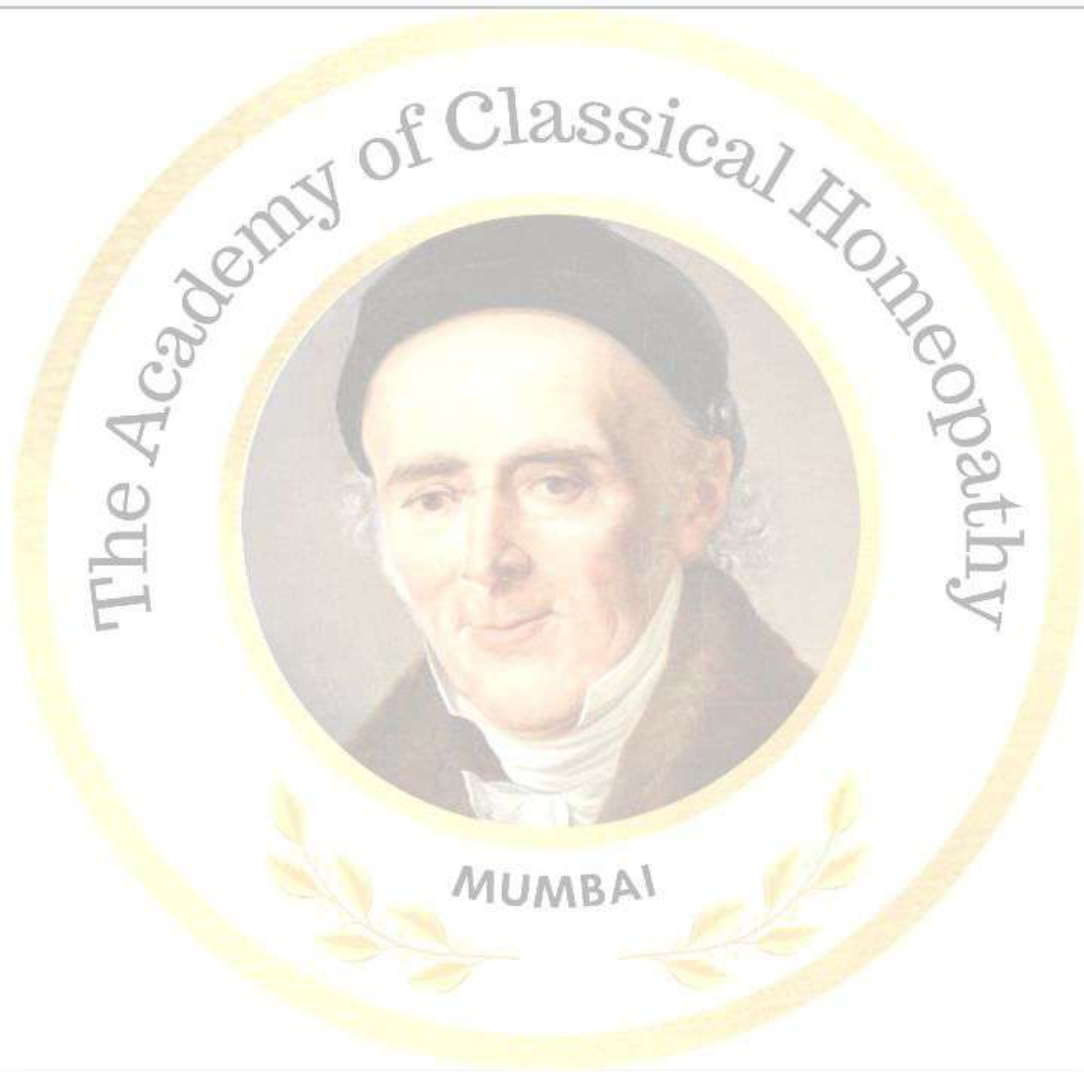
Lycopersicum Esculentum

Tomato

GENERAL.

Marked symptoms of rheumatism and influenza. Severe aching pains all over body. PAINS LEFT AFTER INFLUENZA. Head always shows signs of acute congestion. Hay-fever, with marked aggravation from breathing the least dust. Frequent urination and profuse watery diarrhoea.





The Academy of Classical Homeopathy



MUMBAI